

Infineum Marine Fuel Additives Product Catalogue



Performance you can rely on.





Infineum B Series Marine Fuel Additive Solutions

Infineum has developed a range of marine fuel additives, the Infineum B Series, designed to meet seafarers' needs now and moving towards a decarbonised future. Since 2020 there has been an increase in variable fuel quality resulting in increased issues for fuel operations onboard. Building on years of fuels technical expertise, Infineum B Series of additives was initially developed for addressing the challenges in low sulphur fuels*, however, with the drive towards decarbonisation, there are new hurdles to overcome across the whole marine fuel

spectrum. Infineum B Series additives are cost-effective solutions to help vessel operators reduce maintenance costs/downtime, improve engine efficiency, improve fuel economy and emissions output to help meet the IMO objective of cutting greenhouse gas emissions of international shipping by 50% from 2008 levels by 2050.

*Very Low Sulphur Fuel Oil (VLSFO), Ultra Low Sulphur Fuel Oil (ULSFO) and Marine Gas Oil (MGO)

The Infineum B Series works to address four key areas to ensure enhanced vessel operation:



Wax Management

VLSFO, ULSFO and MGO produced from low sulphur feedstock contain more wax. As temperatures decrease, wax in the fuel drops out of solution and forms wax crystals. As the temperature reduces further, the crystals continue to grow and form lattice structures within the fuel, quickly gelling the fuel, known as the pour point. As little as 1% of wax out of solution can cause this to happen. This can lead to fuel filter plugging, engine fuel starvation and solidification of wax in fuel storage tanks impacting the usage of such tanks. Cold flow additives modify the wax crystal structures

to reduce pour point and prevent rapid filter plugging and plugging of tank output screens.

In addition to this ULSFOs and VLSFOs have lower viscosities which can create issues at the point of injection, cold flow additives provide flexibility to allow fuel transfer at lower temperatures so that optimum injection viscosity can be maintained.

How Infineum can help

With differences between wax distributions for MGO and VLSFOs, it is important that the right additive solution is chosen. Infineum has a wide range of wax crystal modification additives, the Infineum B100 series, ensuring that whatever your requirements we have a solution for you. To find out about our full range of wax management additives, please contact us at fuels.additives@infineum.com



Infineum B100 Series Typical Performance				
	ISO8217 Test	Limit	Treat Rate	Comment
MGO (DMA)	Pour Point CFPP Cloud Point	-6°C Winter (0°C Summer) Report Report	50 - 500ppm 1:20,000 to 1:2,000	Suitable for normal and high cloud point distillate grades
VLSFO	Pour Point	<30°C	300 - 2000 ppm 1:3,300 to 1:500	Suitable for VGO, ULSFO and VLSFO

Treat rates expressed as ppm mass and ton of additive treatment per ton of fuel

Asphaltene Management

Asphaltene deposition (or sludge) is a common concern in VLSFOs due to blending of incompatible aromatic, high sulphur fuel components with paraffinic, low sulphur components in order to meet the 0.5% sulphur limit. ISO8217 has a total sedimentation parameter to help protect vessel operators, however, the test does have its limitations when it comes to ensuring trouble-free operations over an extended period.

How Infineum can help

Infineum asphaltene dispersant chemistry has been designed to improve trouble-free operation onboard ship through enhanced fuel stability and inter fuel compatibility (e.g. at switch over or bunkering) over extended time periods. Infineum marine fuel asphaltene chemistry has proven commercial field performance and demonstrates unique capability to protect, as well as to recover fuels from severe sludge deposition. Performance can be evidenced in all suitable stability/ compatibility test protocols referenced in CIMAC's marine fuel handling guidelines as well as a new test under consideration which mimics onboard fuel operability, the Alfa Laval Spin Test. To find out about our full range of asphaltene management additives, please contact us at fuels.additives@infineum.com



Images show the improved fuel stability when using Infineum B Series asphaltene management chemistry



Images show low treat rate additive effect translated into real world performance in ship purifier systems

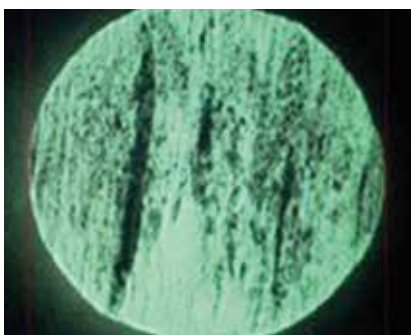
Infineum B200 Series of Asphaltene Management Additives

			Infineum B200 Series Typical Performance	
	Test	Limit	Fuel Maintenance	Fuel Recovery
ISO8217 Standard	TSP TSA	<0.1% mass	<100ppm <1:10,000	1000 to 4000 ppm 1:1,000 to 1:250
Real World Operation	Alfa Laval Spin test	<0.2 mass %	<100ppm <1:10,000	<100 - 1000ppm <1:10,000 to 1:1,000

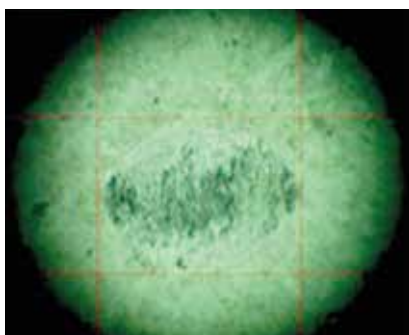
Treat rates expressed as ppm mass and ton of additive treatment per ton of fuel

Lubricity Management

As mentioned above, the move to lower sulphur fuels (MGO, LSFO, ULSFO and VLSFO) has resulted in lower fuel viscosities. Lower viscosity fuels lead to worse lubrication and higher wear in critical high pressure fuel injection components. Infineum lubricity additives have been tested under rigorous US Navy testing protocols.



UNTREATED



TREATED

How Infineum can help

Infineum lubricity additives are designed to reduce wear in mixed lubrication systems keeping engines working for longer. For your specific lubricity management requirements and to find out about our full range of additives, please contact us at fuels.additives@infineum.com.

Images show a typical wear scar of untreated low sulphur fuel in the High Frequency Reciprocating Rig test

Typical inspections and treat rates

Infineum B300 Series	
Typical Performance in MGO (treat rates reported as ppm mass and ton of additive per ton of fuel)	
HFRR (ASTM D6079)	100 to 400 ppm 1:10,000 to 1:2,500
Comment	Most widely approved lubricity improver and tested under rigorous US Navy testing protocols* <small>*Testing performed under Infineum R codes</small>

Combustion Management

The IMO has the objective of cutting greenhouse gas emissions of international shipping by 50% from 2008 levels by 2050. Infineum have developed a combustion improver fuel additive, which has been designed to deliver statistically significant fuel economy and emissions reduction benefits. ISO 8217 addresses fuel combustion quality through CCAI (Calculated Carbon Aromaticity Index), which as the name alludes to is a calculation using the density and the kinematic viscosity of the fuel. It is recognised, with the introduction of VLSFOs, that CCAI may not give an accurate reflection of a fuel's combustion quality due to increased utilisation of cracked cutter stock into the fuel blending pool.

How Infineum can help

The Infineum combustion improver additive will give tangible benefits to ship operators through enhanced Carbon Intensity Indicator (CII) score through enhanced fuel economy as well as significant emissions reductions.



Infineum B400 Series Typical Performance % Reduction vs. Untreated fuel (HFO & VLSFO)

Treat Rate	Fuel consumption	Filter smoke number	CO	CO2	NOx*	Total hydrocarbons*
500ppm 1:2,000	-1.2%	-12.9%	-6%	-1.3%	-6.9%	-8.9%

* Data in HFO only

Infineum Marine Fuel Additive Slate

Application	Issue	Product Range	High Sulphur Fuel Oil (>0.5% S)	Very Low Sulphur Fuel Oil (<0.5% S)	Ultra Low Sulphur Fuel Oil (<0.1% S)	Marine Gas Oil
Fuel Cold Flow	Wax impacting storage, flow and filtration/purification	Infineum B100 series	N/A	Pour point Depressant (PPD)		CFPP & PPD
Fuel Stability/Compatibility	Sludge/Asphaltene control	Infineum B200 series	Fuel recovery (TSP/TSA) and improved onboard fuel handling operation (Alfa Laval spin test)			N/A
Fuel Lubricity	Metal on metal wear	Infineum B300 series	N/A	Enhanced fuel lubricity		
Combustion	Non optimal combustion	Infineum B400 series	Improved fuel combustion (CII) and reduced emissions			



About us

Infinium is a specialty chemicals company whose purpose is to create a sustainable future through innovative chemistry.

A joint venture between Shell and Exxon Mobil, Infinium is one of the world leaders in the formulation, manufacturing and marketing of petroleum additives for lubricants and fuels with operations and production facilities worldwide.

Delivering through powerful research and development capabilities around innovative chemistry, Infinium maintains its relentless focus on technology excellence, reliability, operational excellence and collaboration to deliver to customers *performance they can rely on.*



Infinium draws on a rich heritage that is underpinned by leading edge research and development activities. For nearly 80 years, we have been innovators of additive products, including those used in:

- Automotive, heavy-duty diesel and marine engine oils and fuels
- Diesel fuels
- Specialty applications such as transmission fluids and industrial oils

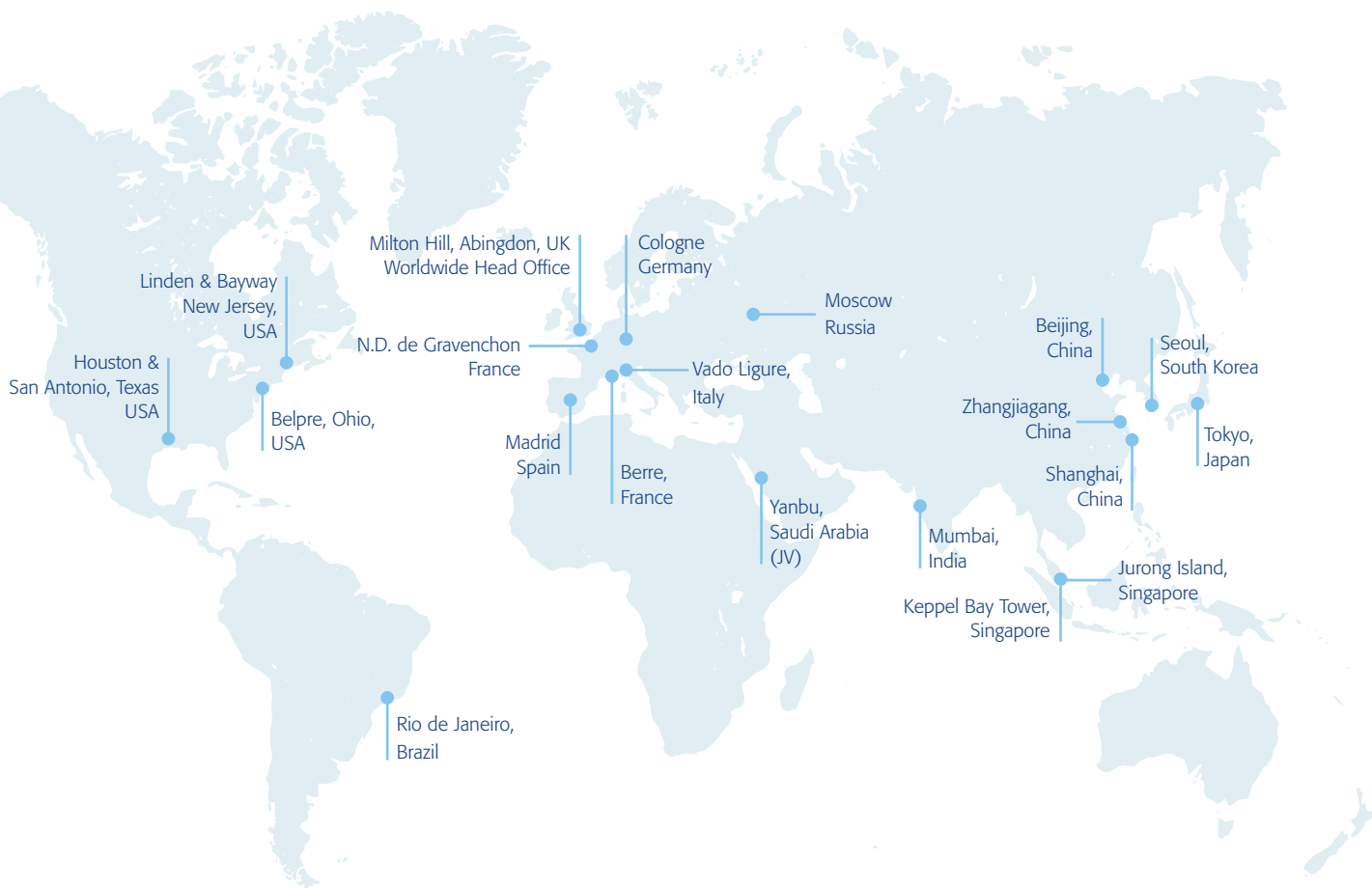
Our smart solutions have become key components of today's most demanding applications and advanced hardware systems.

Infinium is a truly world-class organisation.

Our global operations encompass:

- Worldwide production facilities
- Sales representation in more than 70 countries
- Business centres strategically located in the UK, USA, China and Singapore
- Business conducted in over 20 languages
- A global supply chain
- Multicultural business teams
- Over 2000 highly skilled and dedicated colleagues

Working with Infineum



To discuss your specific requirements and to find out more about our range of marine fuel additives please contact us at fuels.additives@infineum.com



Infineum Marine Fuel Additives



infineuminsight.com/imo2020



Infineum Regional Sales Offices

Europe/Middle East/Africa
PO Box 1
Milton Hill
Abingdon
Oxfordshire OX13 6BB
United Kingdom

Tel: + (44) 1235 54 9501
Fax: + (44) 1235 54 9523

Americas
1900 East Linden Avenue
PO Box 717
Linden NJ 07036
USA

Tel: + (1) 800 654 1233
Fax: + (1) 908 474 6117

Asia Pacific
Infineum Singapore LLP (UEN T20LL0001J)
1, Harbourfront Avenue
#08-01/08 Keppel Bay Tower
Singapore 098632

Tel: + (65) 6899 1661
Fax: + (65) 6895 6900

Infineum (Shanghai) Additives Co. Ltd.
China Business and Technology Centre
Building 12, Jinqiao Office Park
27 XinJinQiao Road
Pudong
Shanghai 201206
China

Tel: + (86) 21 31583940
Fax: + (86) 21 31583802

Not all offices are listed.

To locate your local sales office please contact the nearest address above or visit our website:

Infineum.com

Permission is given for storage of one copy in electronic means for reference purposes. Further reproduction of any material is prohibited without prior written consent of Infineum International Limited.

The information contained in this document is based upon data believed to be reliable at the time of going to press and relates only to the matters specifically mentioned in this document. Although Infineum has used reasonable skill and care in the preparation of this information, in the absence of any overriding obligations arising under a specific contract, no representation, warranty (express or implied), or guarantee is made as to the suitability, accuracy, reliability or completeness of the information; nothing in this document shall reduce the user's responsibility to satisfy itself as to the suitability, accuracy, reliability, and completeness of such information for its particular use; there is no warranty against intellectual property infringement; and Infineum shall not be liable for any loss, damage or injury that may occur from the use of this information other than death or personal injury caused by its negligence. No statement shall be construed as an endorsement of any product or process. For greater certainty, before use of information contained in this document, particularly if the product is used for a purpose or under conditions which are abnormal or not reasonably foreseeable, this information must be reviewed with the supplier of such information.

'INFINEUM', the interlocking Ripple Device, the corporate mark comprising INFINEUM and the interlocking Ripple Device and 润英联, are trademarks of Infineum International Limited.

© 2022 Infineum International Limited. All rights reserved

2022.118

